

Seam Allowance Tools

Users Manual



BABY UNIVERSE

Table of Contents	Terms and Conditions	1
	Install	1
	Manual Install, Tryout and ID	2
	Basic work process	3
	Basic work rules	5
	About Palette	7
	Each command and rules	10
	Example of usage	18
	Advanced features	23
	Units and Line Settings	27
	Trouble Shooting	28
	About Alerts	29

Terms and Conditions

※Before using this software program, please read through all the terms and conditions written below. By using the software program we regard that you have read and understood the following information.

1. License

Basically one license for this software program qualifies one person to use with one application, which means that one license allows you to install the software to one computer. If you attempted to use your license with multiple computer or share it with multiple users, you could be asked for compensation.

2. Warranty of use

It is not possible for us to insure against any accidents that could happen when users use the software program, and as such, we regard your use of the software as agreement that there have been no problems, unless you stop using the software while still using the demonstration version.

Install

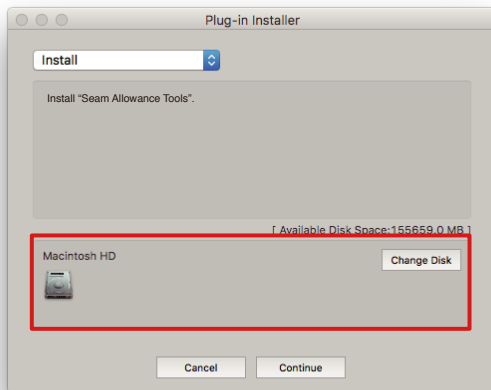
[Install to Mac]

Double click “Installer” icon in the downloaded folder. Click “Start” as the installer launched (It may take a few minutes to launch).

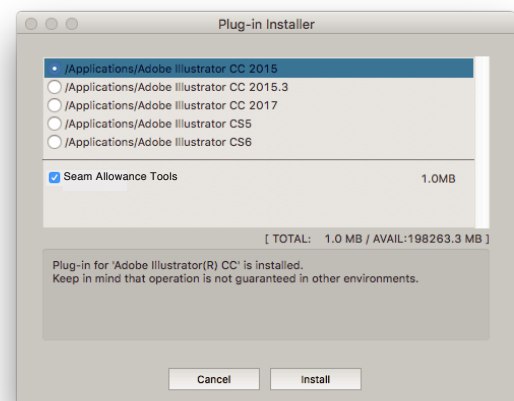


The install program will automatically detect a suitable disk where Adobe Illustrator would be installed in (Figure1). If the disk is not right, click “Change Disk”. Then click “Continue”.

A list of all Adobe Illustrator versions installed in your disk will be shown (Figure2). Select the right version to install the plugin and click “Install”.



[Figure 1]



[Figure 2]

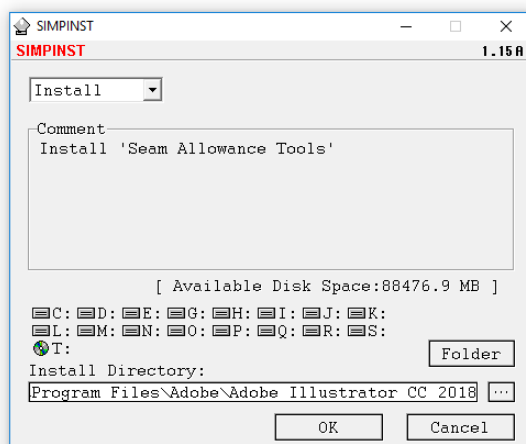
[Install to Windows]

Double click “Setup.exe” icon in the downloaded folder. Click “Start” as the installer launched (It may take a few minutes to launch).

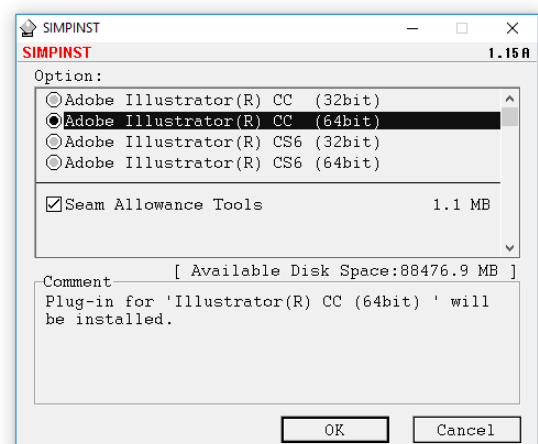


The install program will automatically detect a compatible version of Illustrator installed in your computer (Figure1). If the version is not right, click “Folder” or “Disk” button. Click “OK” to proceed.

Choose the right version of plug-in for your Illustrator (Figure2). For example, if you install to CC2018 choose “Adobe Illustrator(R) CC (64bit)”. Then click “OK” to continue.



[Figure 1]



[Figure 2]

Manual Install →

[Manual Install]

Example: Install to CC2018 64bit for Windows

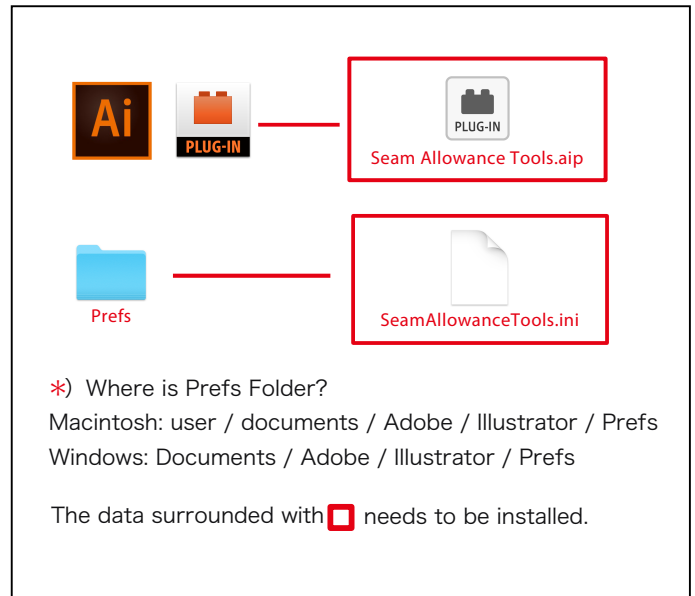
1) Close Adobe Illustrator.

2) Find "Seam Allowance Tools.aip" in following location:
[Downloaded folder / Plug-ins / Seam Allowance Tools CS6_64 / Seam Allowance Tools.aip](#)

3) Copy&paste "Seam Allowance Tools.aip" file to following location:
[Program Files / Adobe > Adobe Illustrator CC2018 / Plug-ins](#)
(Mac : [Applications / Adobe Illustrator CC2018 / Plug-ins](#))

3) Find "SeamAllowanceTools.ini" file in following location:
[Downloaded folder / Prefs / SeamAllowanceTools.ini](#)

4) Copy&paste SeamAllowanceTools.ini file to following location:
[Documents / Adobe / Illustrator / Prefs](#)
(Mac: [User / Documents / Adobe / Illustrator / Prefs](#))

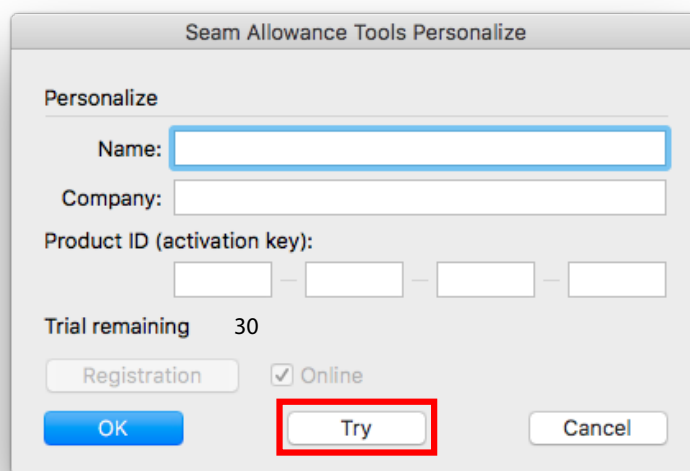


How to personalize

When you start Adobe Illustrator after install of plug-in, a dialog box named "Personalize" appears. Please enter your name, organization (such as company or school name) and ID (activation code) to complete personalization.

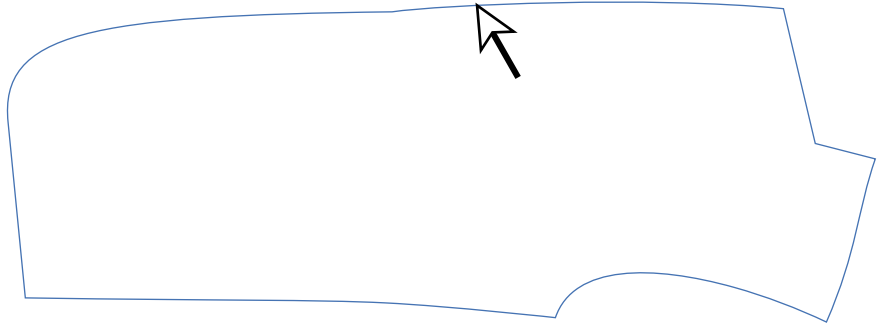
Tryout

If you want to try the software before purchase, click "Try" button. You can try full features for 30 times.



Basic Flow of Work

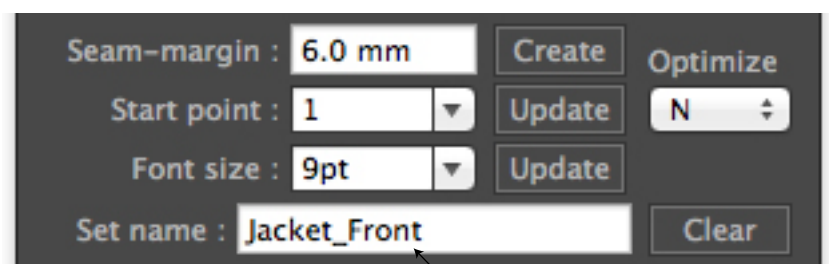
1. Select one part (it is not possible to process multiple parts at the same time) as the target.



2. Select the "Seam Allowance Tools" from the toolbox.

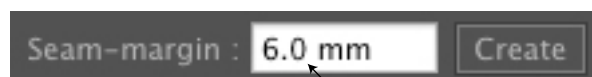


3. Create a new command.



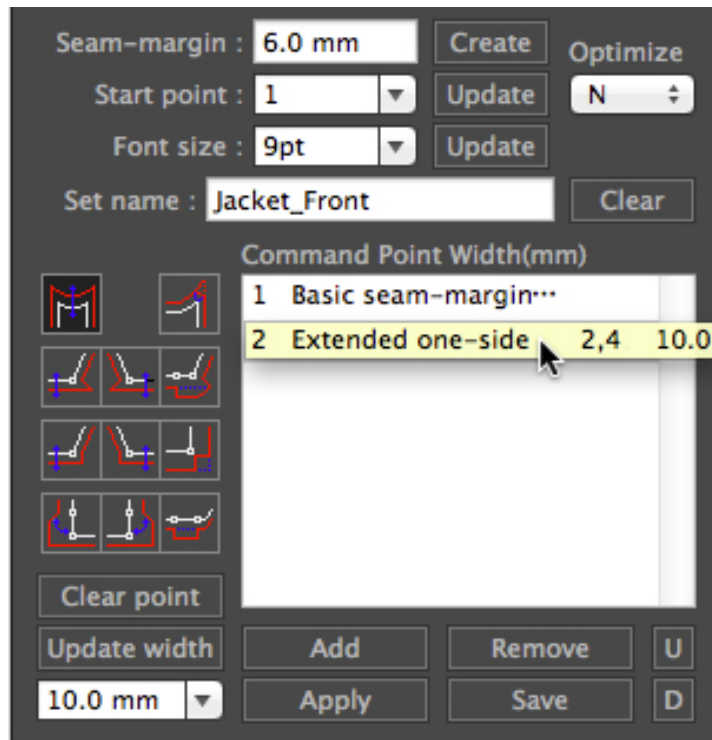
Key Entry

4. Create a "Basic seam-margin".

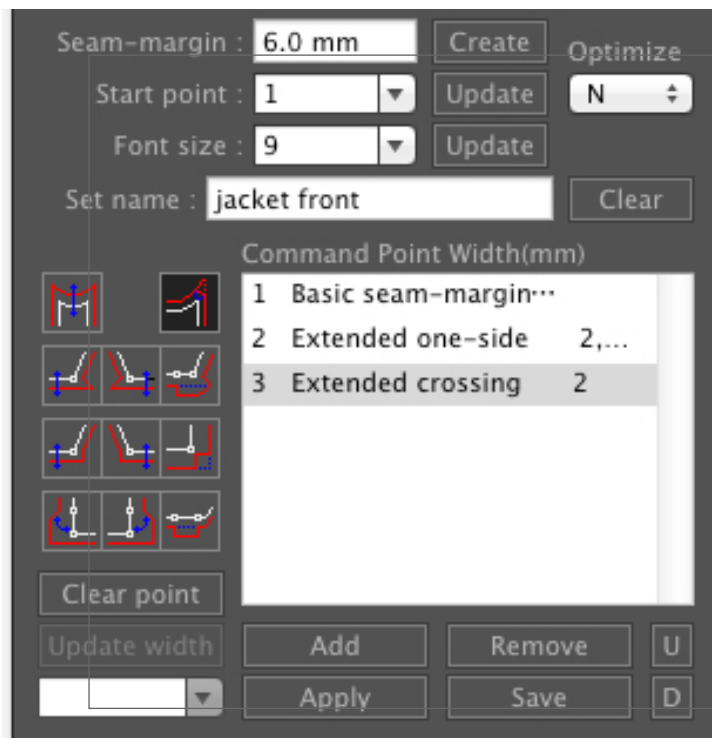


Enter directly (Unit: mm)

5. Using "Extended one-side", change the seam-margin width of each part.



6. Using the "corner work" command, specify the type of processing for the corners of each part.



7. Use "Apply" to apply the command set.



Basic Rules of Work

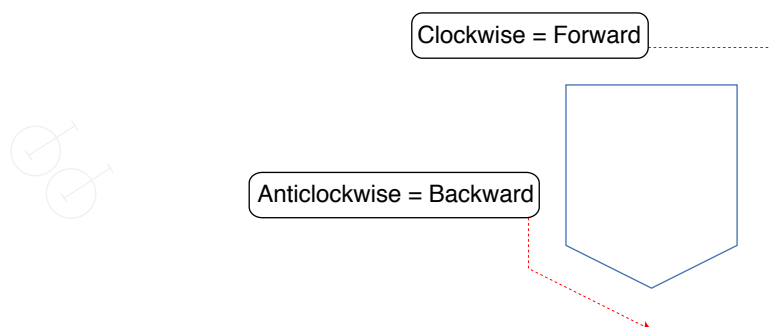
Order of Work Creation of a seam-margin is performed in three steps; (1) "Basic seam-margin", (2) "Extended one-side", and (3) "Corner work". However, as a rule, "Corner work" should be performed after "Extended one-side". After "Corner work" has been performed, seam-margin cannot be changed with "Extended one-side".

ON and OFF of Work Creation work of seam-margin can be turned ON by selecting the "Margin to Seam Tools" in the toolbox. However, it is a prerequisite that the target object (pattern part) is being selected. Selecting a tool other than "Margin to Seam Tools" from the toolbox turns seam-margin creation OFF.

Margin to Seam Tools Palette Selecting Window menu/Display the Margin to Seam Tools displays the "Margin to Seam Tools" palette. The palette is displayed automatically if selecting the target pattern, and then selecting "Margin to Seam Tools" in the toolbox. Even if the palette is displayed, the "Margin to Seam Tools" palette is OFF and cannot be used if "Margin to Seam Tools" in the toolbox is not selected. To close the "Margin to Seam Tools" palette, select window menu/Hide Margin to Seam Tools, or press the Close button (X mark).

Unit The only unit that can be used in the Margin to Seam Tools is mm (millimeters). Enter the settings for seam-margin width in basic seam-margin and extended one-side, etc. using mm (millimeters).

Direction In the Margin to Seam Tools, the direction for pattern parts is defined as "Forward" for clockwise, and "Backward" for anticlockwise. When setting seam-margin width or corner work for extended one-side or the reverse command, the order of settings

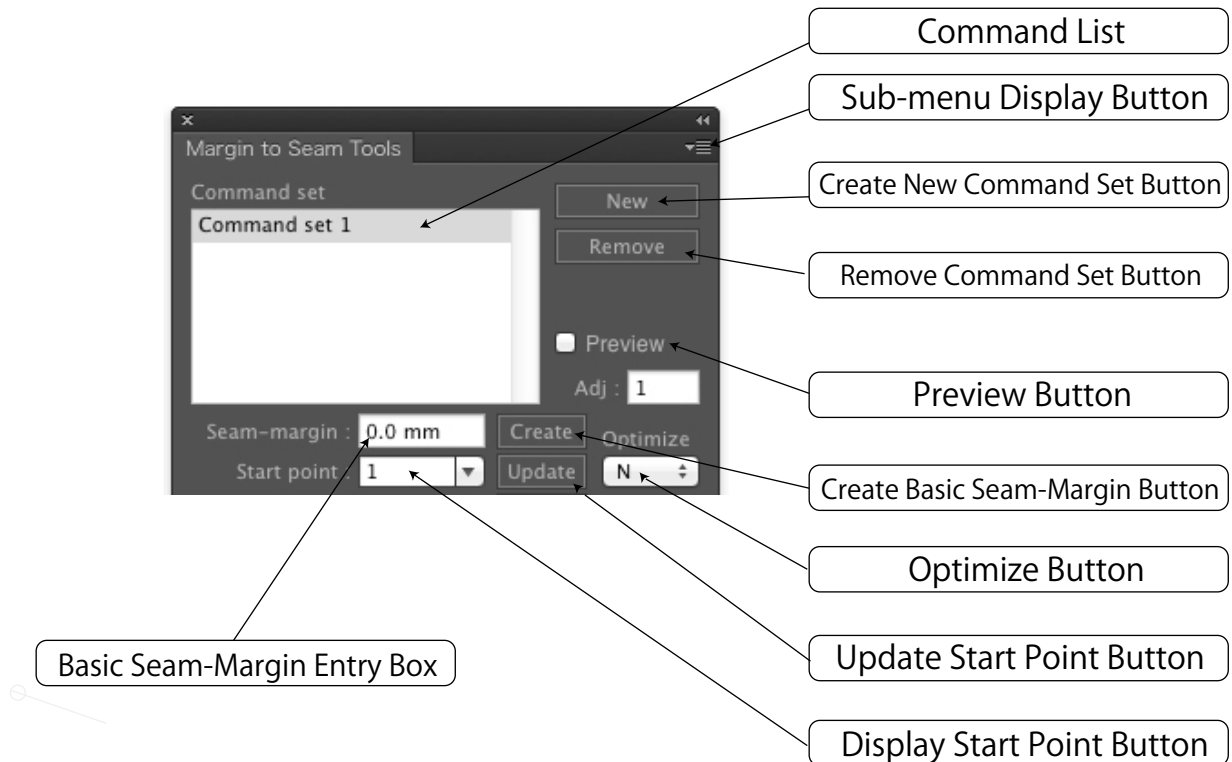


Moving between documents	While performing seam-margin creation work, it is not possible to move to another document. When moving to another document to work, be sure to switch to a different tool in the toolbox and suspend seam-margin creation work.
Multiple processing	It is not possible to process multiple parts at the same time. It is only possible to perform seam-margin creation of one part at a time when using the Margin to Seam Tools.
Suspending work	When suspending seam-margin creation work before completion, switch to another tool in the toolbox (Switching with short-cuts does not apply). The work will be suspended.
Application paths	The only objects that can be applied using the Margin to Seam Tools are closed paths. Application to open paths is not possible.
Saving command sets	It is possible to save contents of commands sets with the desired name. It is possible to apply a saved command set to different sized versions of the same parts. Select the relevant patterns and switch to the Margin to Seam Tools from the toolbox. Select the relevant command set from the command list of the Seam-margin tool palette, and press the "Apply" button.
Important Point 1	As the Margin to Seams Tools processes calculations using its unique logic, when there is a contradiction in the seam-margin and corner work, please be aware that automatic processing may not be possible, or unexpected seam-margins may be generated.
Important Point 2	<p>In very rare cases, invalid shapes (such as protrusions or notches) may be generated on seam-margins after the Margin to Seams Tools are executed. This phenomenon is believed to be caused by a fundamental flaw in Illustrator itself, and cannot be avoided by the program. If the phenomenon above actually occurs, use one of the following methods to correct the problem.</p> <ol style="list-style-type: none"> 1. On the art board, move the relevant pattern to another location 2. Rotate the relevant pattern (90° or 45°) 3. Copy the relevant pattern to a new document <p>The methods above have been proven to be effective in circumventing the phenomenon explained above.</p>

Work Palette

Upper Section of the Palette

Creation work of seam-margin can be turned ON by selecting the "Margin to Seam Tools" in the toolbox. **However, it is a prerequisite that the target object (pattern part) is being selected.** Selecting a tool other than "Margin to Seam Tools" from the toolbox turns seam-margin creation OFF.



Command List

Displays command sets in the order in which they were created.

Display Button

Displays the sub-menu.

Create New Command Set Button

Creates a new command set.

Remove Command Set Button

Deletes a command set.

Preview Button

Previews seam-margin creation work.

Basic Seam-Margin Entry Box

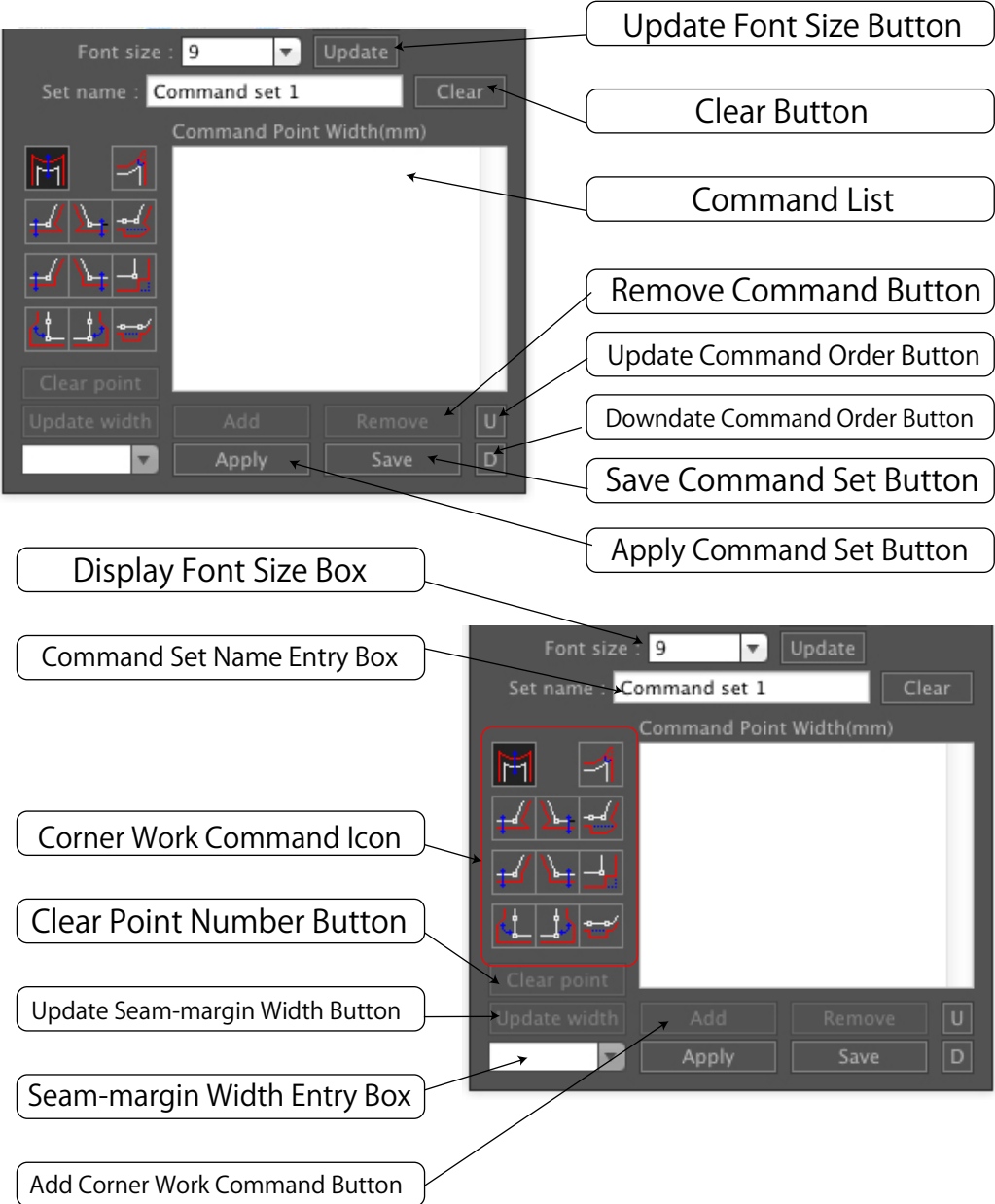
Creates the basic seam-margin. Enter the basic seam-margin width, and then execute using the Create button.

Display Start Point Button

Changes the point numbers displayed on a pattern. Execute by pressing the Update button.

Lower Section of the Palette

The "Sub-menu Display Button" in the upper-right of the palette displays the lower section of the palette.



Display Font Size Box Displays the font size of the point numbers displayed on the pattern. Press the Update Font Size button to change the font size.

Clear Button Deletes all of the content of the list.

Command List Displays the content of the list, in order.

Update Command Order Button Changes the order of the content of the list. Select the relevant command and press the Up or Down button.

Remove Command Button Deletes the selected command.

Apply Command Set Button	Executes the content set in the list.
Save Command Set Button	Saves the content set in the list.
Command Set Name Entry Box	Enter the name for the command set.
Corner Work Command Icon	After base seam-margin, add any commands, such as extended one-side as necessary. Select the icon and press the "Add" button to add corner work commands. The command is added to the command list.
Clear Point Number Button	To change the set points added to each command, select the relevant command and press the "Clear point" button. Specify the next point to set.
Seam-Margin Width Entry Box	When setting each command of Extended one-side, Turnback, 45°, and Opening commands, enter the seam-margin width for the range of processing. Press the "Update width" button to set the value.

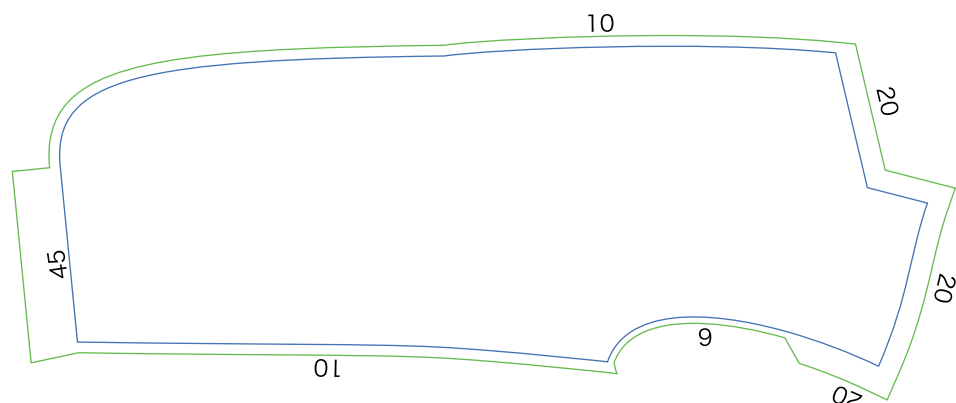
Usage and Rules of Each Command

Basic seam-margin

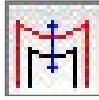
The seam-margin that is set first becomes the basic seam-margin. Enter the value directly in the entry box below using numbers. Millimeters is the only unit that can be used. After you have entered the basic seam-margin width, press the Create button on the right. The basic seam-margin is added to the Command Set box.

The screenshot shows a software interface for setting the basic seam-margin. At the top, there is a 'Seam-margin' input field with '6.0 mm' entered and a 'Create' button. Below this is a larger panel with several settings: 'Seam-margin' (6.0 mm), 'Start point' (1), 'Font size' (9pt), and 'Set name' (Jacket_Front). Each of these has an 'Update' button. To the right of these is an 'Optimize' button with a dropdown menu showing 'N'. Below the settings is a 'Command Point Width(mm)' table with one entry: '1 Basic seam-margin' with a width of '6.0'. To the left of the table are several icons representing different seam types. At the bottom of the panel are buttons for 'Clear point', 'Update-width', 'Add', 'Remove', 'Apply', 'Save', and 'D'.

Basic seam-margin sets the width of the narrowest section in the target parts. For patterns such as the one below, as the narrowest seam-margin is the 6 mm arm hole, set 6 mm for the basic seam-margin. If a wider section, such as the 10 mm front end is used to set the basic seam-margin, the extended one-side which is set later will not operate correctly.

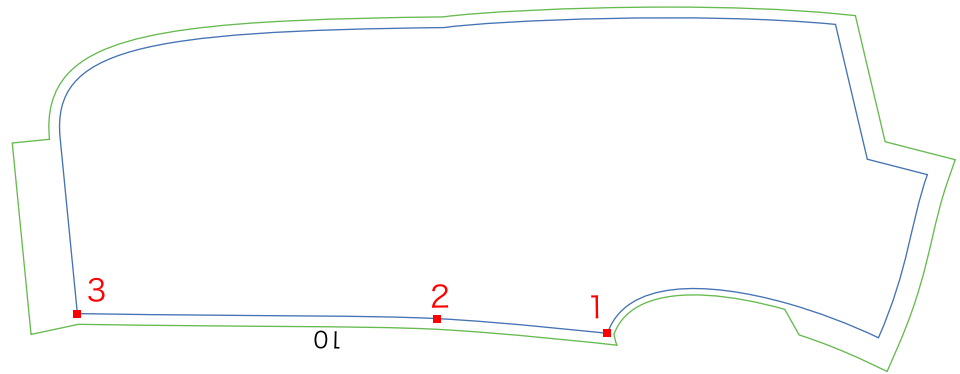


Extended one-side



Extended one-side creates a seam-margin with differing widths. As a rule, set extended one-side before setting any corner work. Set the extended one-side **in order from the narrowest section** of the target pattern.

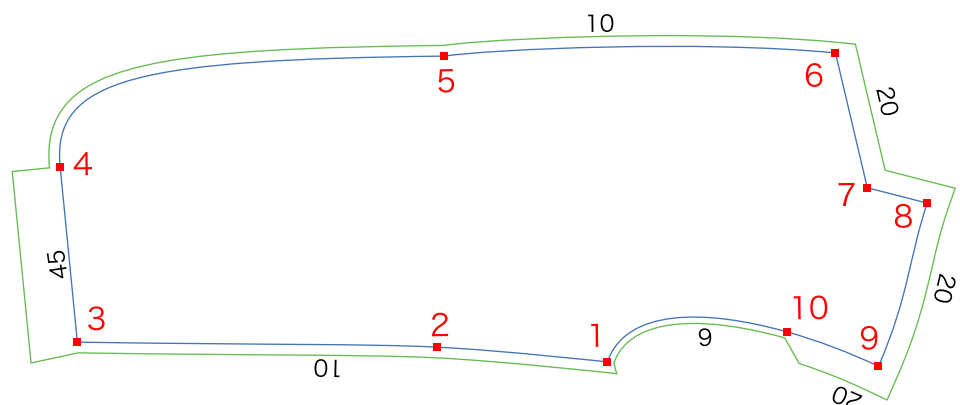
Specify the extended one-side in the order of the point settings. For example, when specifying the width of side in the diagram above, set the points **from point 1 to point 3 in order** (Clockwise = Forward direction).

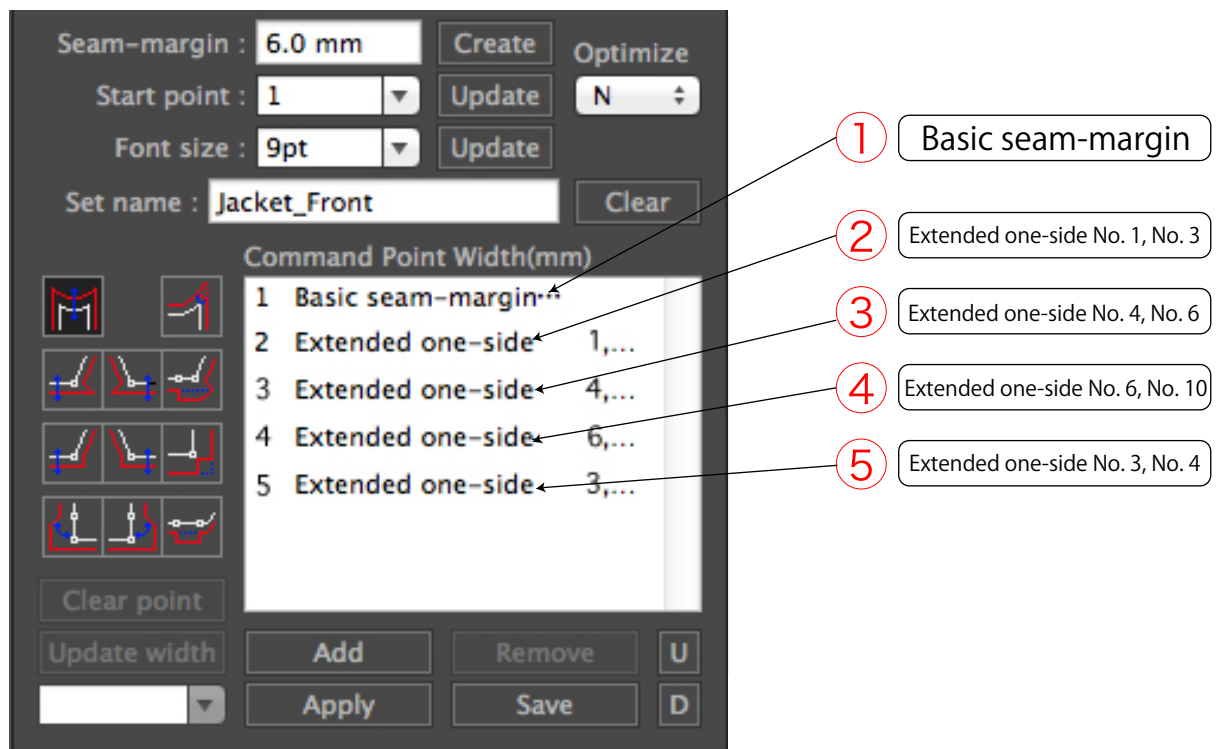


For patterns such as the one in the diagram below, set the basic seam-margin width as the 6 mm of the arm hole, but the first part that will be set for the extended one-side will be the 10 mm for front end or the 10 mm for side. If they are the same width, reversing the order is acceptable.

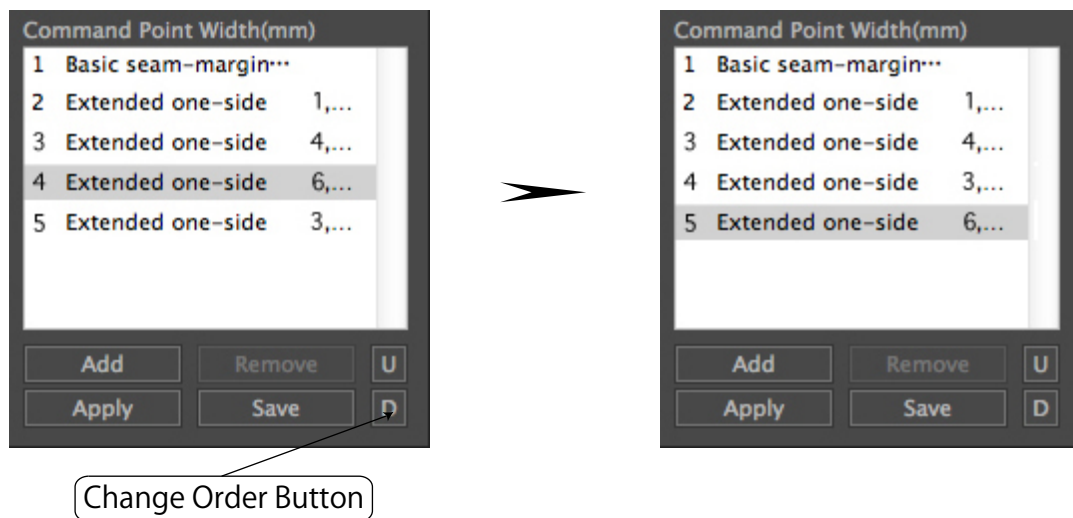
The next part to set will be the neck line, shoulder line, or part of the arm hole, all of which are 20 mm. Finally, set the collar which is 45 mm. In total you have set six extended one-sides.

However, as in the drawing below, the same seam-margin width is used from No. 1 to No.3, No.4 to No.6, and No. 6 to No. 10. In such cases, as it is possible to specify the same number for seam-margin width in a single command, requiring only four extended one-sides. The content of the command set to this point is as shown in the diagram below.





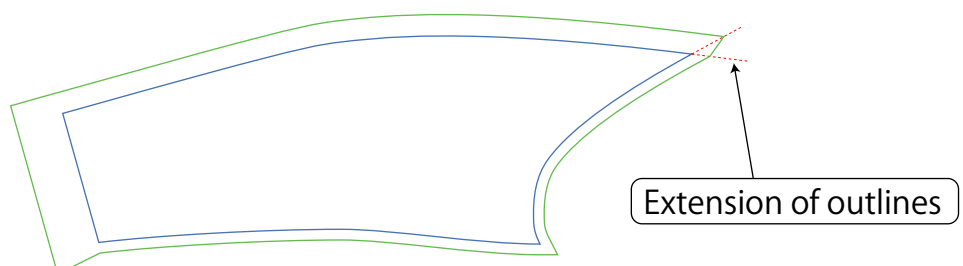
If you make a mistake in the order during work, or you notice a mistake after application, use the "Change Order" button to change the order in the command set.



Extension Intersection



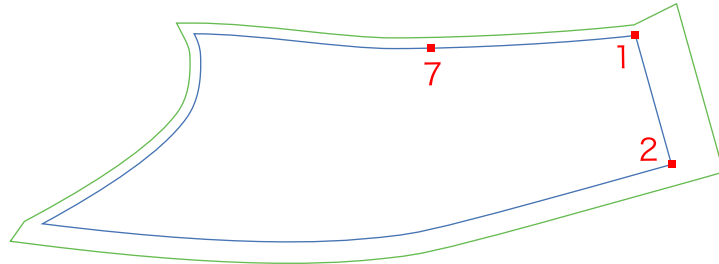
Extension intersection is the corner work command for extending each outline then connecting intersected points. Add the extension intersection icon to the command set, and specify the point to make an extension intersection.



Rev. forward



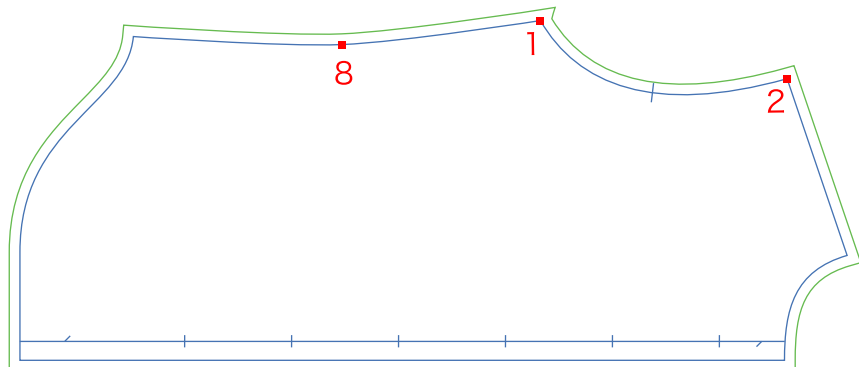
Rev. forward is the reversal tool used when the reverse axis of the relevant point is in the forward direction. When reversing the corner of point 1 in the diagram below, in order to place the cuff line, which is the reverse axis, in position No. 1-2 of the forward direction (clockwise) from point 1, select "Rev. forward" as the reversal command. Add the Rev. forward icon to the command set, and specify the point to reverse.



Rev. backward



Rev. backward is the reversal tool used when reverse axis of the relevant point is in the reverse direction. When reversing the corner of point 1 in the diagram below, in order to place the side line, which is the reverse axis, in position No.8-1 of the reverse direction (anticlockwise) from point 1, select "Rev. backward" as the reversal command. Add the Rev. backward icon to the command set, and specify the point to reverse.



Turnback

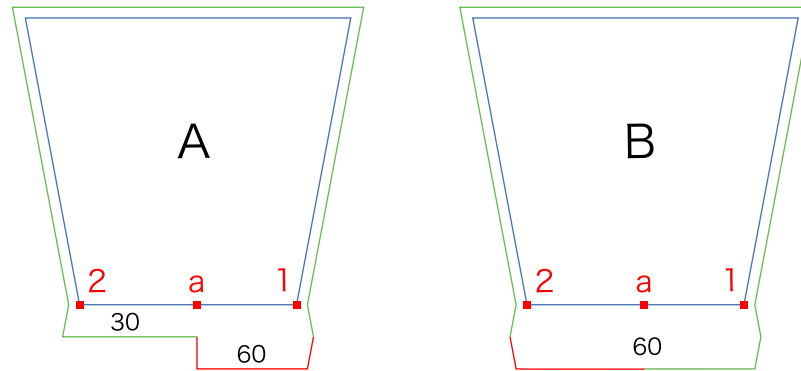


Turnback is the command used to generate a form like the red line section of diagram A below.

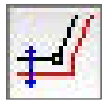
When reversal is set for points 1 - a after setting a 30 mm extended one-side and a reversal for points 1 and 2, a form like the red line is generated.

Also, if an additional turnback is specified for points 2 - a, a symmetrical figure like diagram B below can be generated.

There are no limits on the setting order of directions for the turnback command.

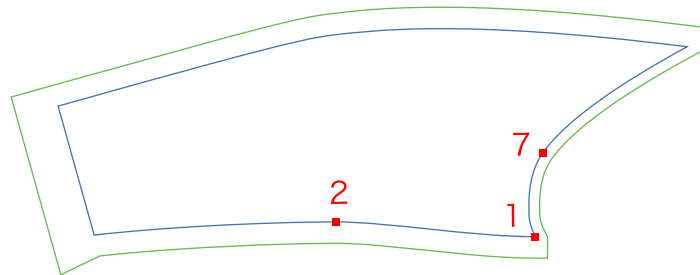


90° forward



90° forward is the 90° reversal tool used when the reverse axis of the relevant point is in the forward direction.

When reversing the corner of point 1 in the diagram below, in order to place the inner sleeve line, which is the reverse axis, in position 1 - 2 of the forward direction (clockwise) from point 1, select "90° forward" as the reversal command.

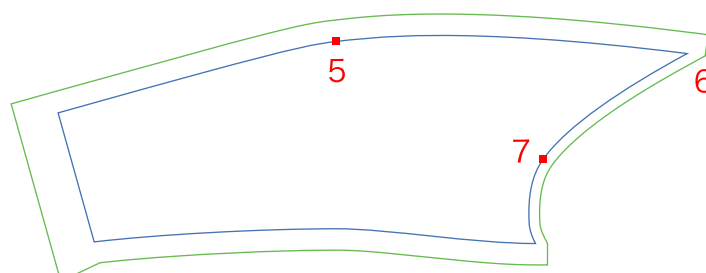


90° backward

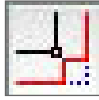


90° backward is the 90° reversal tool used when the reverse axis of the relevant point is in the backward direction.

When reversing the corner of point 6 in the diagram below, in order to place the outer sleeve line, which is the reverse axis, in positions 5 - 6 of the backward direction (anticlockwise) from point 6, select "90° backward" as the reversal command.



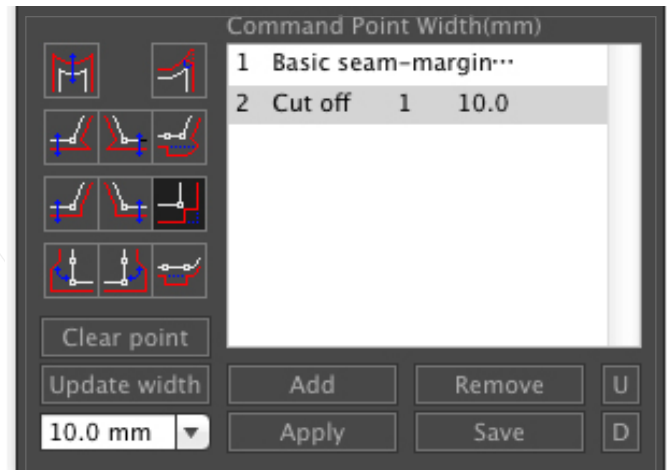
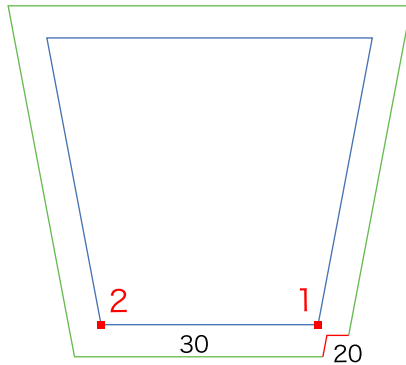
Cut off



Cut off is the command used to generate a form like the red line section of the diagram below.

By setting a 30 mm extended one-side for the entire part and a 10 mm cut off for point 1, a cut form with a width of 20 mm (10 mm from the outline) is generated.

Add the Cut off icon to the command set, and set the point to cut off and the width of the cut.



Note

The cut off command can only be used in locations generated using a basic seam margin or an extended one-side. It cannot be applied to corners for which Reverse, 90°, Turnback, 45°, or Opening has been set.

It is possible to cut off the entire width of a seam margin (make the width zero). In the diagram above, if you set a cut off width of 0 mm, it is possible to cut to point 1 of the outline.

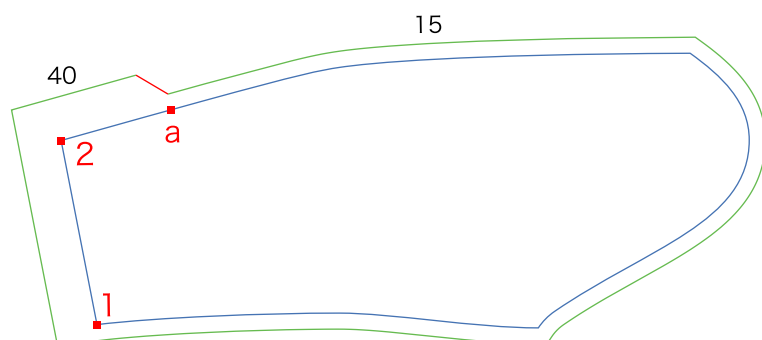
45° forward



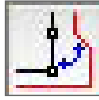
The 45° command is a tool for making a 45° cut on one side of a generated seam-margin. To specify the side to make 45° last (the second), it is required to use the icon for both the forward and backward directions.

The diagram below is an example to add a 40 mm seam-margin from point 1 - a, and make a 45° angle towards a.

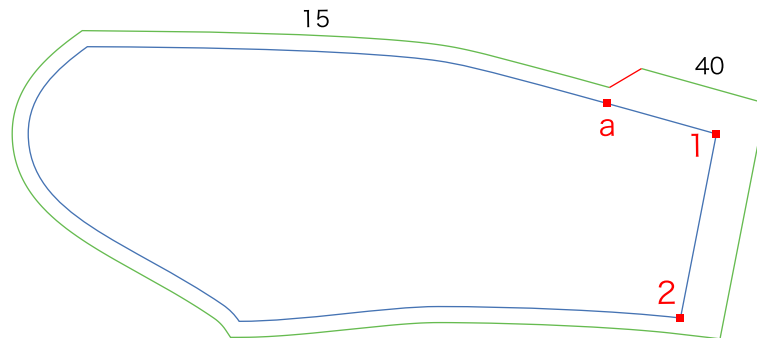
As the order of point specification is 1 - a, the 45° "Forward" command will be used.



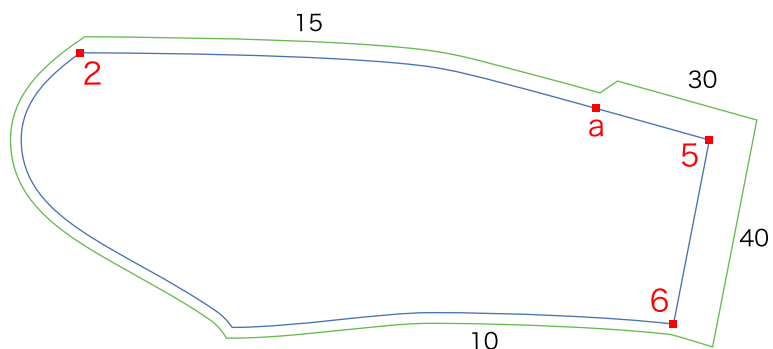
45° backward



The diagram below shows an example to add a 40 mm seam-margin from point 2 - a, and make a 45° angle towards a. As the order of the point specification is the backward direction (anticlockwise) from point 2 - a, the 45° "Backward" command will be used.



Note The command used for the 45° command varies depending on the order of point specification. The point which you want to make 45° (the second point specified) can be specified on any path other than an anchor point. When the seam-margin width of the area you want to make 45° is narrower than the surrounding seam-margins, first add an extended one-side to the wider one (See the diagram below).



Command Point Width(mm)

1	Basic seam-margin...	
2	Extended one-side	2,...
3	45. backward	5,a 30.0
4	Extended one-side	5,6 40.0
5	Rev. backward	6

1 Basic seam-margin 10.0

2 Extended one-side 2,5 15.0

3 45. backward 5,a 30.0

45° backward (Seam-margin narrower than the surrounding)

The seam-margin width is wider than the 45° above

Clear point

Update width

30.0 mm

Add Remove U

Apply Save D

Opening

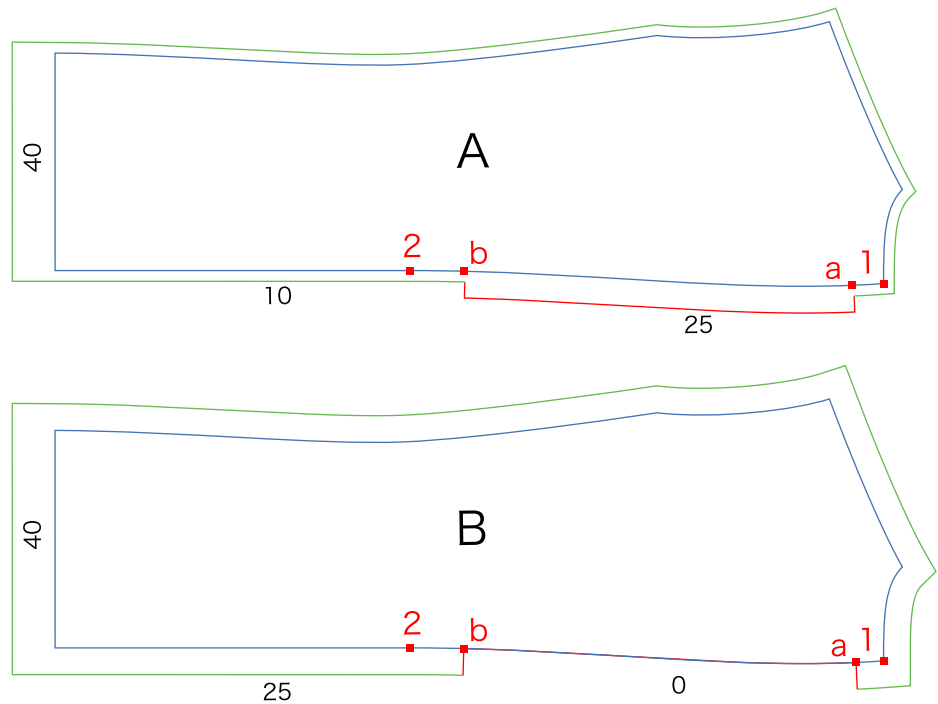


Opening is the command used to generate a form like the red line section of diagrams A and B below.

Specify the seam-margin with an opening (an anchor point or a point on a path) **in the forward direction**.

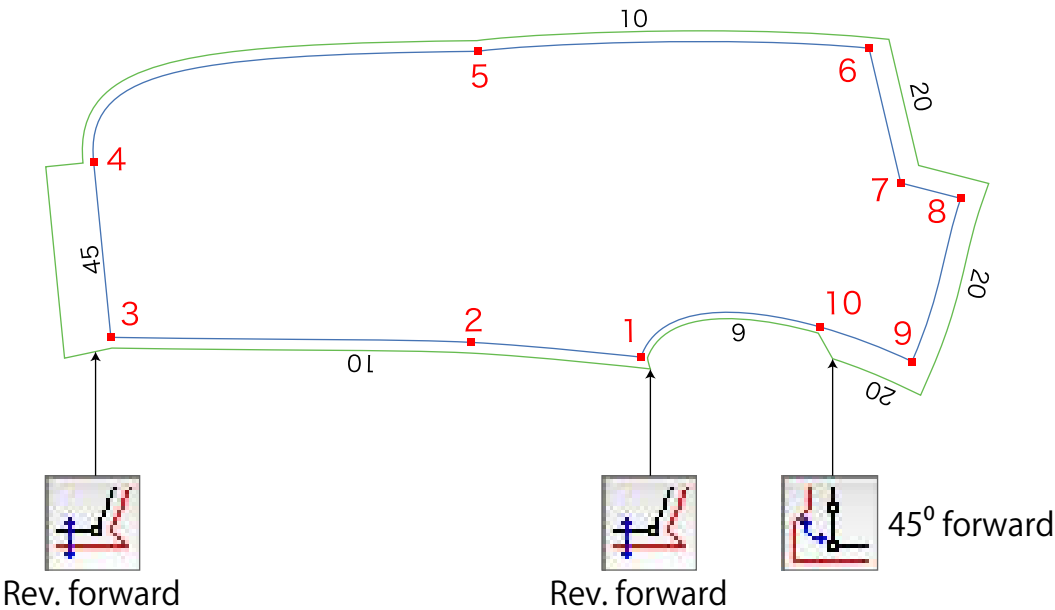
In diagram A below, after setting 10 mm for the basic seam-margin and 40 mm for the extended one-side, an opening of 25 mm is specified for point a-b in the forward direction (clockwise).

As "0" can be set for Opening, it is possible to set a seam-margin of "0" for the seam-margin of the open section a - b as shown in diagram B below.



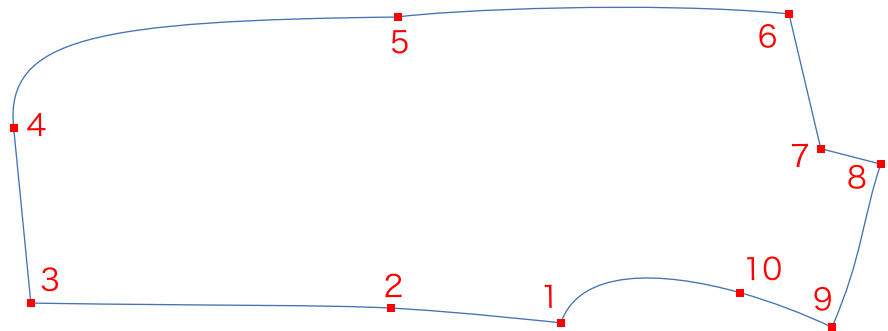
Operation example Specific seam allowance work using the jacket pattern below as an example.

In the diagram, the blue line indicates the outline and the green line indicates the seam allowance (cutting line). Black numbers are the seam allowance widths (mm), red numbers are the point numbers and red words are the command names (icons) applied to corner work.



Base Seam allowance	As armholes require the narrowest seam allowance, set the base seam allowance to 6 mm.														
Extended one-side	Seam allowance is 10 mm from the underarm to the lower hem (1 to 3) and for the center front edge (4 to 6). Seam allowance is 20 mm for the neck, shoulder and upper part of the arm hole (6 to 10). Seam allowance is 45 mm for the lower hem (3 to 4). Each range is designated for extended one-side and the seam allowances are set. Seams must be sewn in order of width starting from the narrowest, as described above. The correct order is 1 – 3, followed by 4 – 6, and then 6 – 10.														
Command list details and sequence	<p>Command list details and sequence</p> <p>Because point 10 requires 45° processing, set the range to 6 – 10. Extended one-side is not required for this section.</p> <p>In order to reverse corners 1 and 3, use the overall command set according to the details and sequence listed below.</p> <table> <tr> <td>Seam allowance</td><td>6 mm</td></tr> <tr> <td>Extended one-side</td><td>1 – 3, 10 mm</td></tr> <tr> <td>Extended one-side</td><td>4 – 6, 10 mm</td></tr> <tr> <td>Extended one-side</td><td>3 – 4, 45 mm</td></tr> <tr> <td>Rev. forward</td><td>1</td></tr> <tr> <td>Rev. forward</td><td>3</td></tr> <tr> <td>45° forward</td><td>6 – 10, 20 mm</td></tr> </table>	Seam allowance	6 mm	Extended one-side	1 – 3, 10 mm	Extended one-side	4 – 6, 10 mm	Extended one-side	3 – 4, 45 mm	Rev. forward	1	Rev. forward	3	45° forward	6 – 10, 20 mm
Seam allowance	6 mm														
Extended one-side	1 – 3, 10 mm														
Extended one-side	4 – 6, 10 mm														
Extended one-side	3 – 4, 45 mm														
Rev. forward	1														
Rev. forward	3														
45° forward	6 – 10, 20 mm														

1. Select the target part, and then select "Margin to Seam Tools" from the toolbox. The "Margin to Seam Tools" palette is displayed.
2. Press the "Create" button on the palette.
Point numbers are allocated to each anchor point on the selected part in a clockwise direction. It is possible to change the location of the start of these numbers. To change the font size of the numbers, use "Font size".

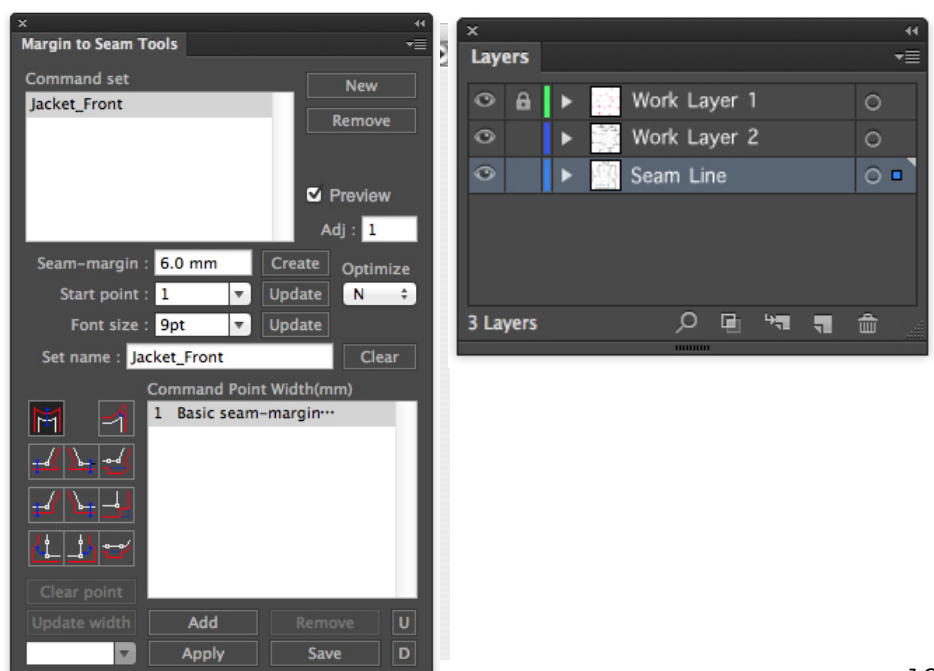


3. Enter the name for the set to save in the "Set name" text box. In this example, the name "Jacket_Front" is used.

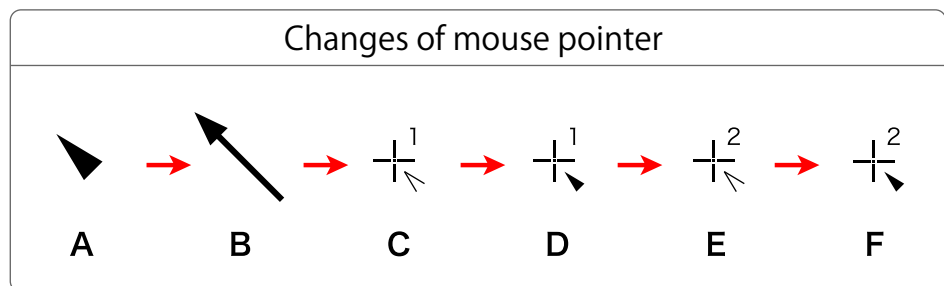
A screenshot of the 'Margin to Seam Tools' palette. It contains the following fields and buttons:

- Seam-margin : 6.0 mm [Create] [Optimize]
- Start point : 1 [v] [Update] [N]
- Font size : 9pt [v] [Update]
- Set name : Jacket_Front [Clear]

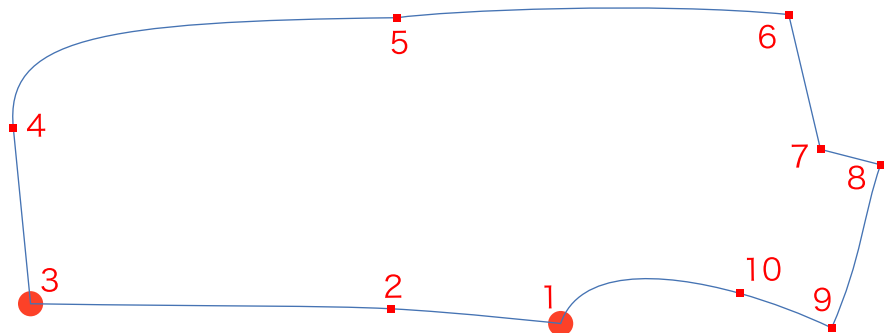
4. Enter 6 mm in the "Basic seam-margin" and then press the "Create" button. Selecting the "Preview" check box generates the basic seam-margin of the selected part. The basic seam-margin is added to the command list. At the same time a new work layer, "Work Layer 1" is created in the Layers palette.



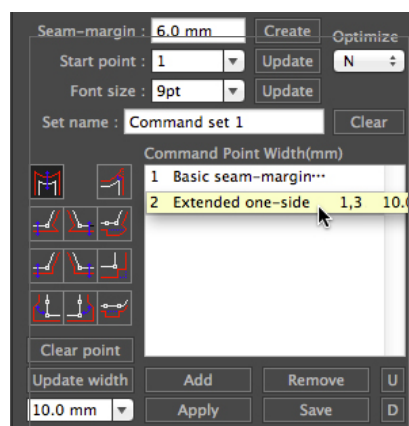
5. Select the "Extended one-side" icon and press the "Add" button.
6. The mouse pointer changes to an arrow shape (A-F).
First, set a seam-margin of 10 mm for the side.
Select the anchor points to change the seam-margin width of **clockwise, in sequence**.
When mouse pointer C is hovered on the anchor point 1, it changes to D.
Click the point. The pointer changes to E.
When the mouse pointer is moved to the second anchor point, 3, the point changes to F. Click to finish specification of the range.



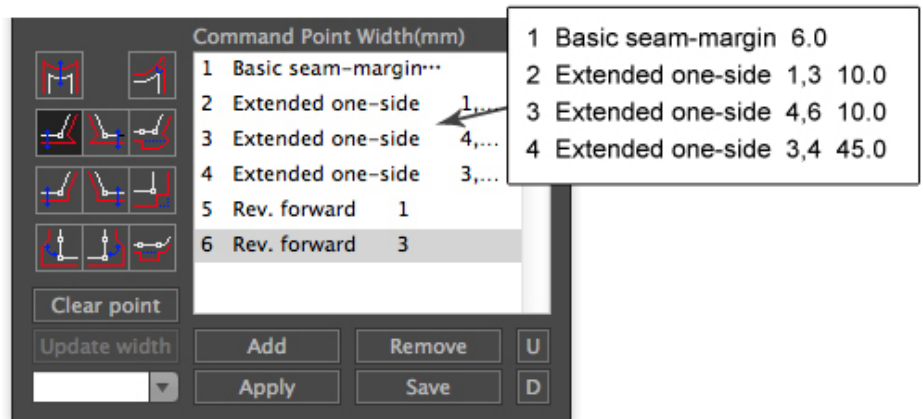
7. When specification is complete, red circles are added to the two anchor points, as shown in the diagram below.



8. Enter a seam-margin of 10 mm in the "Update width" text box, and press the "Update width" button. Confirm that the seam-margin width has changed. Check that extended one-side has been added to the command list.

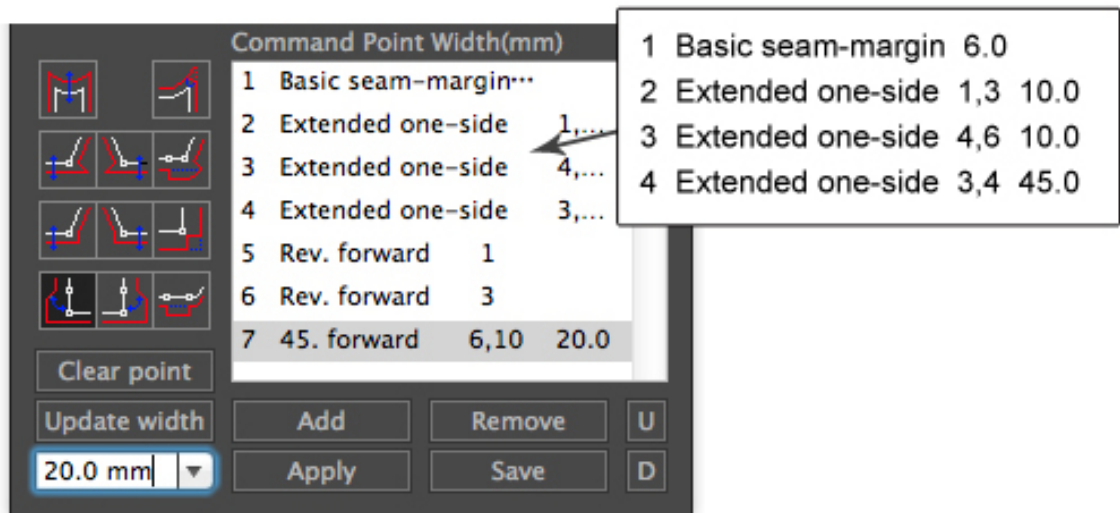


9. Next, change the seam-margin of the front end.
Using the same procedure for the side, specify the range of 4 - 6 and set a seam-margin of 10 mm. Then specify 3 - 4 with a 45 mm seam-margin, and execute the next command.
10. Set Reverse and 45°, setting either one first. In this example, Reverse is set first.
To reverse point 1, as the reverse axis is the side line when viewed from point 1, the reverse axis should be located before point 1. Therefore, Rev. forward will be applied as the reverse axis is in the forward direction. Select the Rev. forward icon and press the "Add" button. Check that the mouse pointer has changed to B, and then move it to point 1. Check that the mouse pointer has changed to D and then click point 1. Check that Rev. forward has been added to the command list. Set Rev. forward for point 3 in the same way.

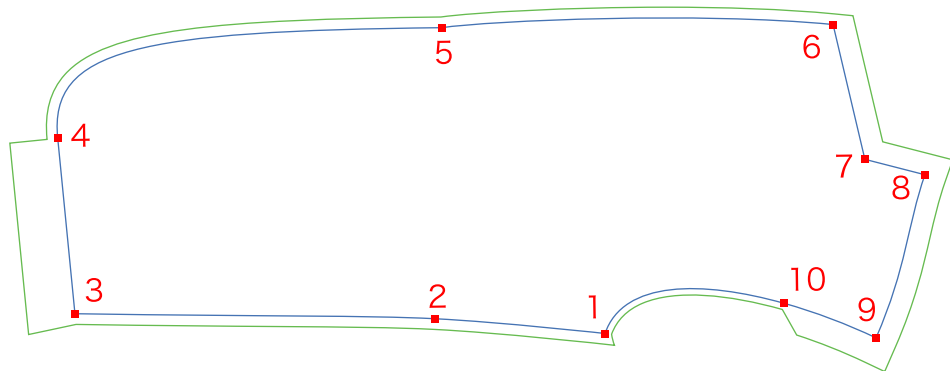


11. Finally, set 45°.
When specifying the range of 45°, specify the section to make 45° last (the second point). The icon to choose differs depending on the specification direction, so be careful.
In this example, it is required to make point 10 of the arm hole 45°, first specify point 6 and specify point 10 last. As the specification direction is backward, the icon to select is 45° forward. Select 45° forward and press the "Add" button. Hover the mouse pointer on point 6, and check that it changes to D and then click point 6.
When the pointer has changed, move the mouse pointer to point 10, check that it changes to F, and then click point 10. Enter a seam-margin of 20 mm in the "Update width" text box, and press the "Update width" button. Confirm that the seam-margin width has changed. Check that 45° forward has been added to the command list. The setting of the command list is complete. If the Preview check box is checked, the content of the list will be previewed, so check that there are no mistakes. The final content of the list is shown in the next diagram.



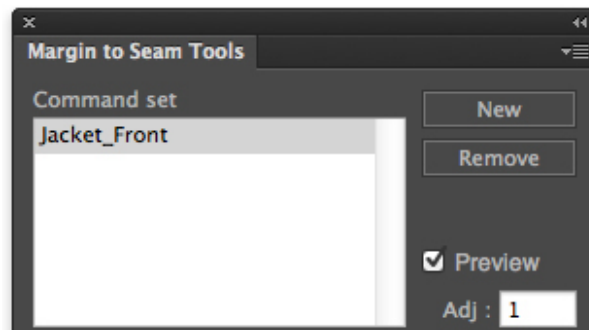


Final Content of the Command List



Check that the content of the preview is the same as the diagram above.

12. If there are no mistakes in the content of the command list, save the set.
Press the "Save" button on the palette.
"Jacket_Front" is saved in the command list.



13. Finally, press the "Apply" button.
The contents of the preview will be replicated, and application of the seam-margin will be executed.
A new layer, "Seam Line" will be created in the Layers palette.
All seam-margins created in the Margin to Seam Tools are stored in this layer. Move it to another layer as necessary.

Advanced Functions

Changing Command List Content

It is possible to change all content of saved command lists. The following explanation describes how to change the content of the "Jacket_Front" created earlier. As all changing of setting contents is performed using the Margin to Seam Tools palette, it is necessary that the **pattern (a closed path object)** is selected to make the palette available.

Select the pattern and then switch to the Margin to Seam Tools of the toolbox.

Basic seam-margin

Increase the basic seam-margin from 6 mm to 8 mm. Select "Jacket_Front" from the command set list. Enter 8 mm in the basic seam-margin width entry box and press the "Create" button. The basic seam-margin in the command list is changed to 8 mm.

Save

When the modification work above is completed, save the content of the list. Press the "Save" button on the palette. If you make further changes, perform the following procedure while keeping the Margin to Seam Tools palette state ON.

Extended one-side

Next, change the extended one-side 1-3 from 10 mm to 15 mm. Select command 2, "Extended one-side 1,3 10.0" in the command list. When the seam-margin width entry box becomes active, enter 15 mm and press the "Update width" button. Command 2 is changed to 15 mm.

Change List Content Order

By the changes made above, command 2 "Extended one-side 1,3 15.0" is now wider than command 3 "Extended one-side 4,6 10.0". As the rule for extended one-sides is that they must be set **from the narrowest**, it is necessary to switch the order of command 2 and command 3. Select command 2. Click the "D" of the "Change Order" buttons on the right of the list, one time. Command 2 and command 3 are switched.

Change Points

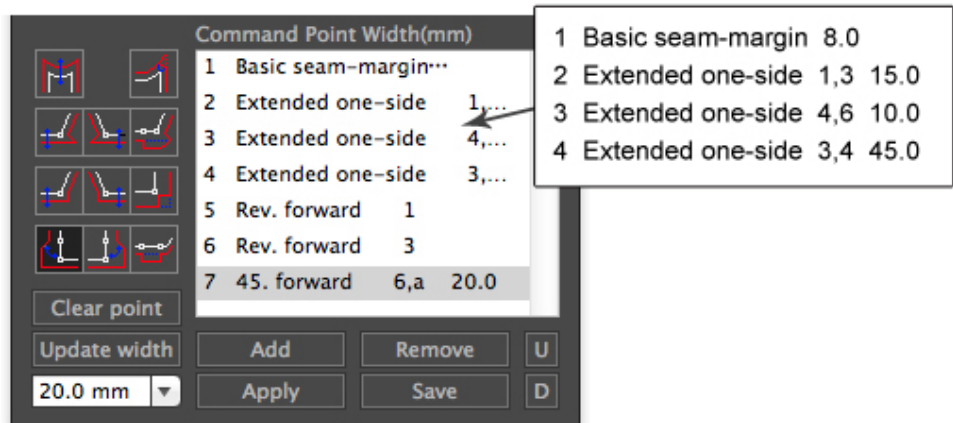
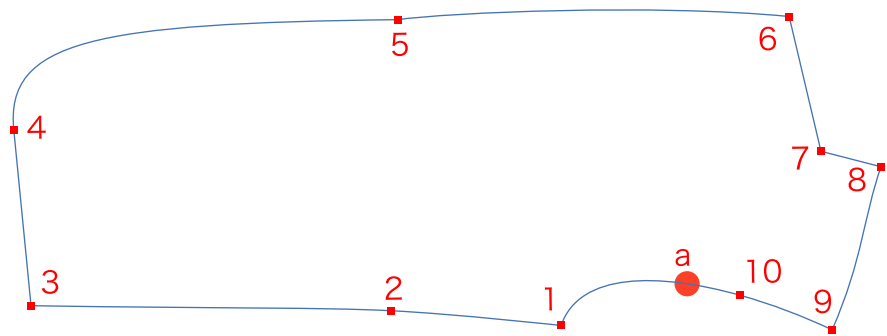
It is possible to change all of the specified ranges of points for commands. In the following explanation, command 7 "45° forward 6,10 20.0" of "Jacket_Front" will be used as an example to show how to change. Set the specified range at a location lower than point 10, where there is no anchor point. While the Margin to Seam Tools palette is ON, select command 7.

When the "Clear point" button becomes active, press the button. When the mouse pointer changes, align it on top of point 6, the start. When the pointer changes to D, click point 6 and it will change to E. Then, as in the diagram below, click a point on the arm hole. The clicked point will be displayed with a red circle, and its point number will be a.

Enter 20 mm in the seam-margin width entry box and press the "Update width" button.

In this way, it is possible to set 45°, turnbacks, and openings in locations other than anchor points.

Check that command 7 has been changed.



Delete Commands

All commands can be deleted.

The following explanation uses command 5, "Rev. forward 1" as an example. While Margin to Seam Tools palette is ON, select command 5. Press the "Remove" button on the lower-right of the list. The "Remove" button can be used to delete selected individual commands.

To delete all commands in a single action, press the "Clear" button to the right of the "Set name". All commands in the list will be deleted.

Reuse of Sets

It is possible to reuse saved command sets. For parts that have been graded, their anchor points and the form are the same even if the size is different. In such cases, a saved command set can be reused using a single button. Select the relevant part and then hold the Margin to Seam Tools. Select the relevant command set from the command list. Press the "Apply" button of the palette.

Special Method of Use

The following explanation is a special method of using the Margin to Seam Tools and the pattern parts shown below are used as an example.

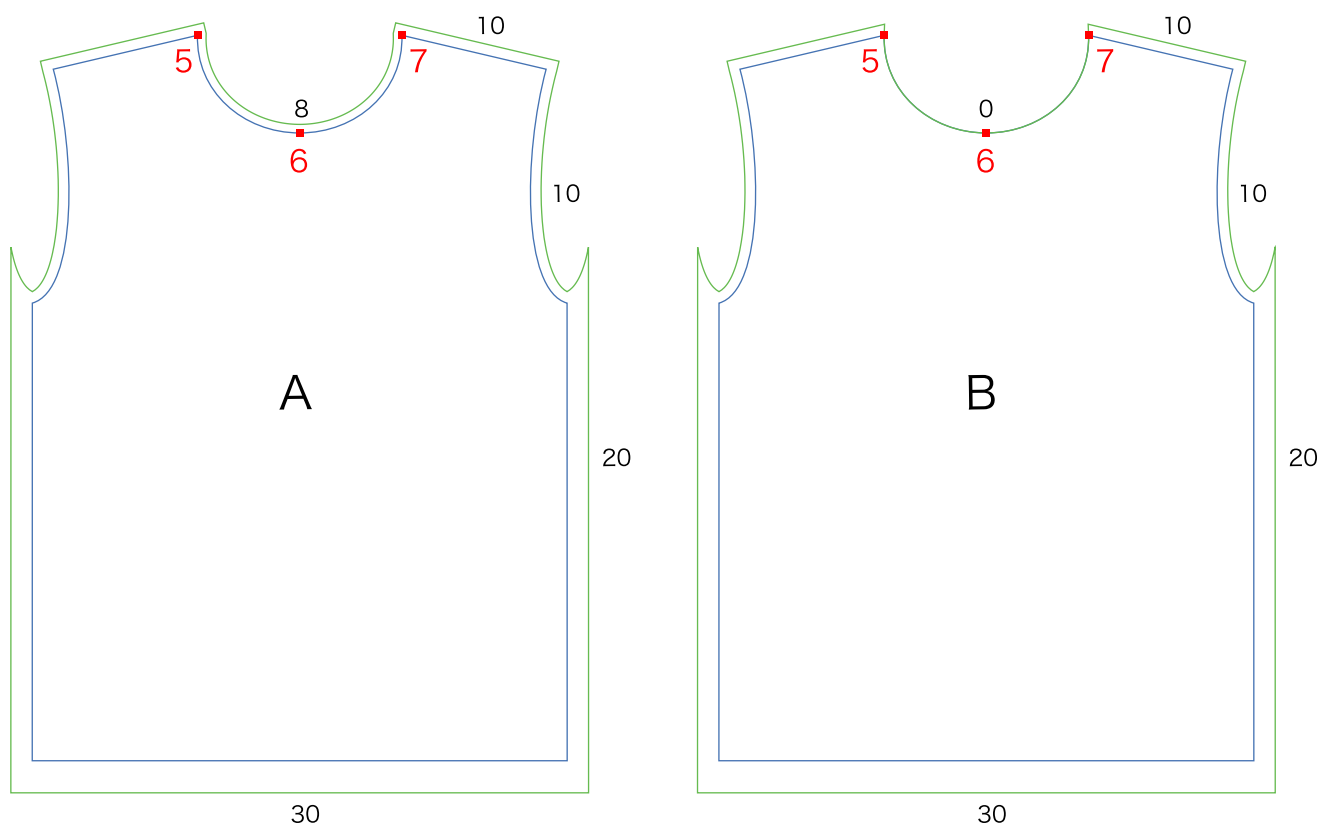
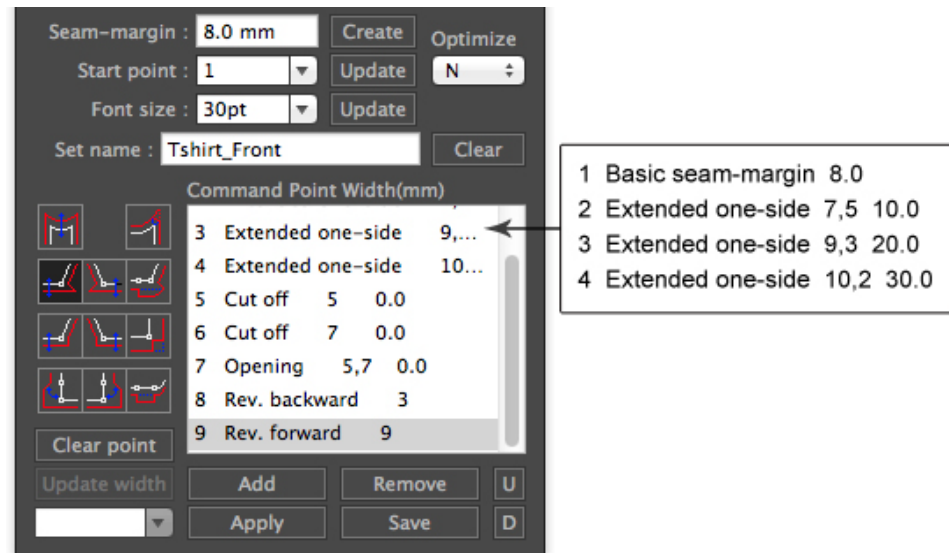


Diagram A above is the front pattern for a standard T-Shirt. When a binding is used for a collar, the width of the binder is usually included in the seam-margin of the neck. In such cases, it is necessary to cut the neck along the outline as shown in B. The method for doing this follows.

1. Set "Cut off" for points 5 and 7.
Select the cut off icon and press the "Add" button.
Specify point 5, and enter "0 mm" in the "Seam-margin width entry box".
Specify point 7 in the same way, and enter "0 mm".
Select Opening and press the "Add" button.
Make the range 5 to 7 and enter "0 mm" in the "Seam-margin width entry box".
As mentioned earlier, points other than the above can be set as desired.
The content of the overall list will be as follows.





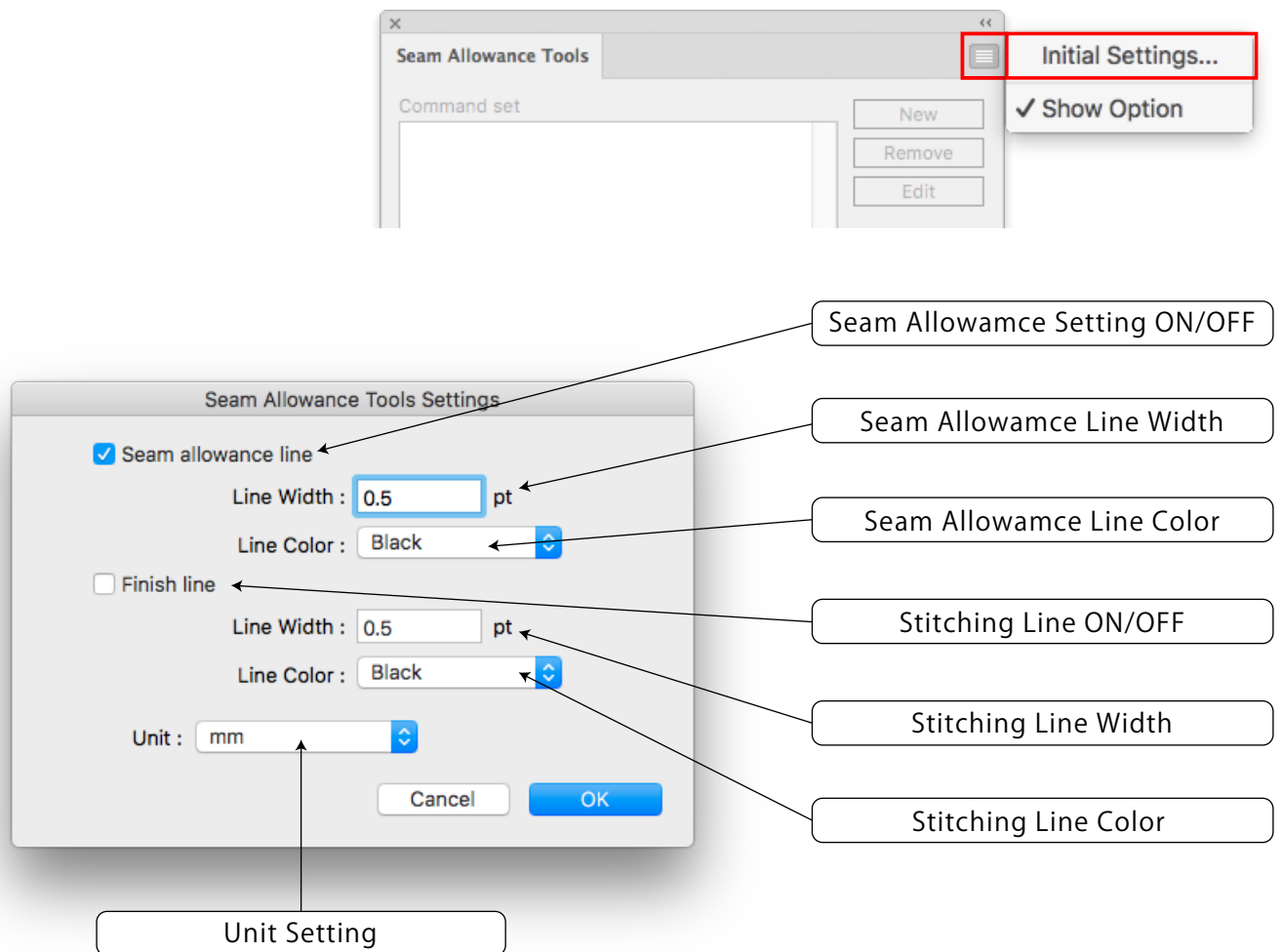
Final Content of the Command List

This method is a useful technique that can also be applied to other parts, such as cuffs

Note As mentioned earlier, the cut off command can only be used in locations generated with a basic seam margin or an extended one-side. It cannot be applied to corners for which Reverse, 90°, Turnback, 45°, or Opening has been set. Accordingly, in this case of T-Shirt, **it is not possible to use Reverse or 90°** on points 5 and 7.

Unit and Line Settings

To change unit and line settings of seam allowance and stitching line, choose "Initial Settings" in the upright of palette.



Seam Allowamce Setting ON/OFF

If the check box is ON, line width and color settings will be applied when seam allowances are outputted to a layer.

Seam Allowamce Line Width

Enter line width for seam allowanace.

Seam Allowamce Line Color

Choose line color for seam allowanace.

Stitching Line ON/OFF

If the check box is ON, line width and color settings will be applied when a stitching(finish) line is outputted to a layer.

Stitching Line Width

Enter line width for stitching line.

Stitching Line Color

Choose line color for titching line.

Unit Setting

Choose unit from mm, cm and inch. Change of unit setting will be put into effect after clicking OK button.

The Margin to Seam Tools Palette does not Become Active (ON).

1. Check that the part you are trying to apply the seam-margin to is selected.
2. Check that Margin to Seam Tools is selected in the toolbox.

When you want to Suspend Seam-margin Application.

1. Switch to another tool in the toolbox.
Use the mouse for switching, as switching by short-cuts does not apply.

Work has been Suspended but the Point Numbers on Parts (Objects) are still Displayed.

1. Delete "Work Layer 1" and "Work Layer 2" from the layer palette.

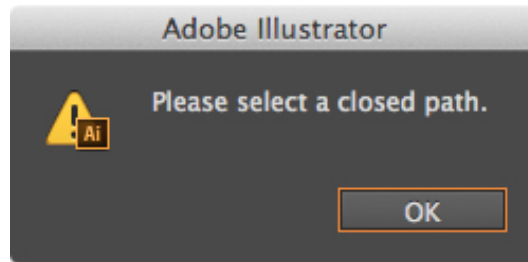
Seam-Margins Are not Created as Set.

1. Refer to "Usage and Rules of Each Command" in the manual, and check that there are no mistakes in each command.
2. Check that there are no mistakes in the unit for the set seam-margin. The only unit for the Margin to Seam Tools is millimeters.

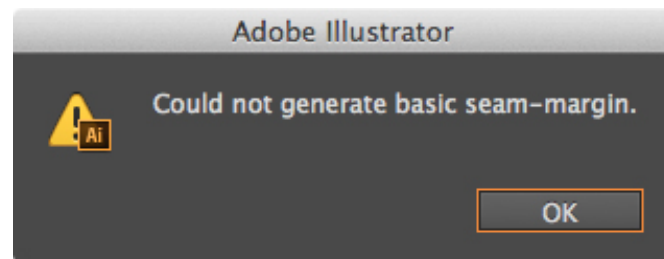


Regarding Display of Alerts

During application of seam-margins, alerts may be displayed due to incorrect operation. This section explains each alert and how to avoid them.

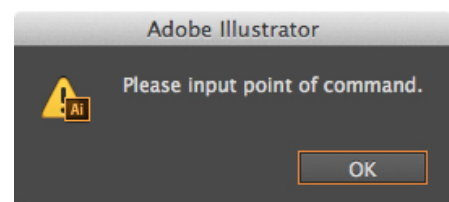
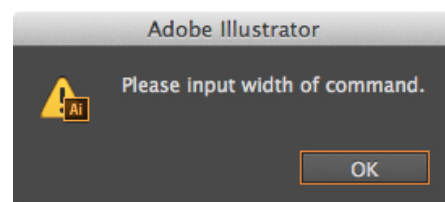


The only paths that the Margin to Seam Tools can use are closed paths.

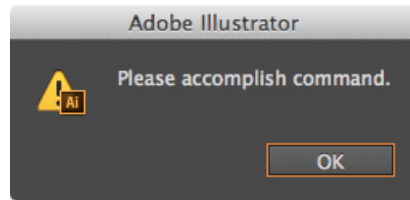


When the contents of a command include a contradiction that prevents execution, a warning like the one above will be displayed by the Margin to Seam Tools. Check the seam-margin width, the specified direction of the range, and the order of commands, etc.

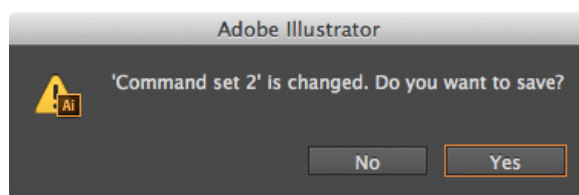
Values entered in the Basic Seam-Margin entry box must be larger than 0.



The two alerts above, are displayed when an invalid operation (clicking of a white space in the list, etc.) is performed while a command for setting the seam-margin of Extended one-side, Turnback, 45°, Opening, etc. is performed. Press the "OK" button of the alert, select the relevant command from the list, and correct it. Work can be continued.



This alert is displayed when an invalid operation (clicking of a white space in the command set list, etc.) is performed while a command for setting the seam-margin of Extended one-side, Turnback, 45°, Opening, etc. is performed. Press the "OK" button of the alert, select the relevant command from the list, and correct it. Work can be continued.



This alert is displayed when an invalid operation (clicking of a white space in the command set list, etc.) is performed while a command for setting the seam-margin of Extended one-side, Turnback, 45°, Opening, etc. is performed. Press the "OK" button of the alert, select the relevant command from the list, and correct it. Work can be continued.



BABY UNIVERSE

Supervised by SEAGEL GARMENT TECHNOLOGIES Incorporated

© 2018 BABY UNIVERSE Inc.