

AIPLOT-Pro

User's Manual



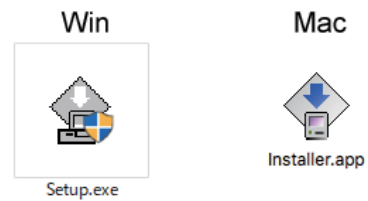
Install

By installing, copying or using this software you are considered to have agreed to the End User License Agreement.

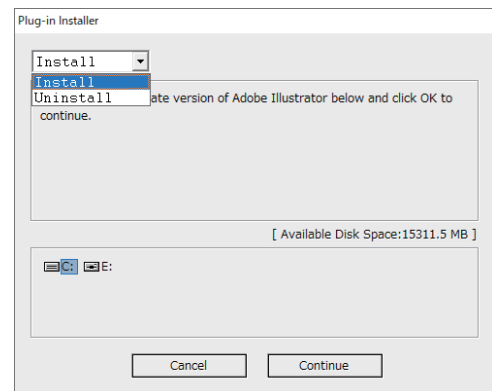
Read the End User License Agreement :
<https://ipm-modelist.com/en/support/eula/>

Please exit Adobe Illustrator before launching the install program.

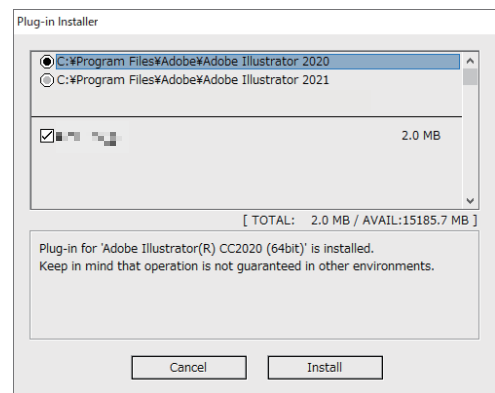
Windows : Double click "Setup.exe" icon.
 Mac : Double click "Installer" icon.



Click "Start" when the installer launched. (It may take a few minutes to launch.)
 The install program will automatically detect a suitable disk where Adobe Illustrator is installed in. If the disk is not right, click "Change Disk".
 Click "Continue" to proceed.



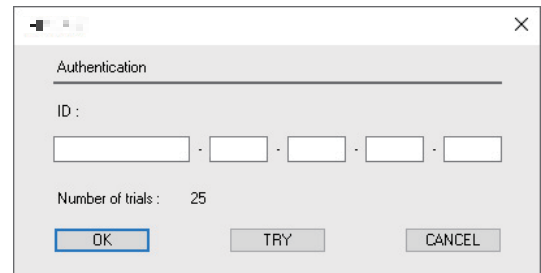
A list of Adobe Illustrator installed in your disk will be shown. Select the right version to install the plug-in.
 Click "Install" to start install.



License Authentication

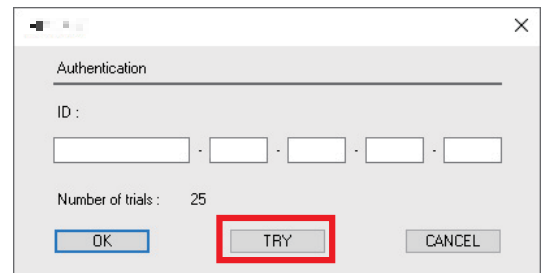
Enter your ID (which has been sent to you by email after purchase) in the authentication window and click "OK".

Now your license is authenticated and you have one year access to the plug-in.

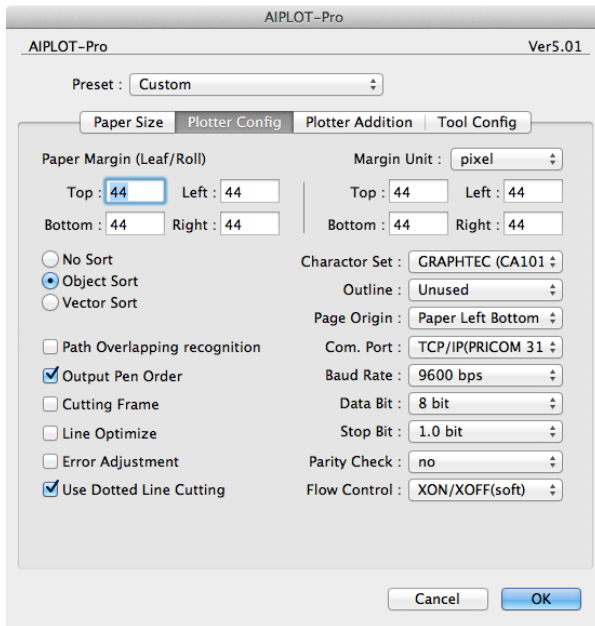


Trial Use

Click "TRY" button to tryout the plug-in. You can use full functions of the plug-in until the number of trial is all used up.



● Plotter Config



■ Margin Setting:

Choose an appropriate unit from the Margin Unit pull-down menu. Then, assign the same value of the plotter margins to top/bottom/left/right margins. For individual sheets of paper, input a value in Paper Margin on the left. For a roll of paper, input on the right. The default margin value is 15 mm.

■ Communication Condition Setting:

The values of Character Set and Page Origin are the same as the plotter setting values.

***Set HP-GL to all commands on the plotter side.** Then, set Baud Rate, Data Bit, Stop Bit, Parity Check and Flow Control. Usually, use the default settings on the plotter side as shown in the figure.

■ Sort Setting:

Object Sort: Output each object from lower left of the sheet.

Vector Sort: In this setting, the movement of pen is the minimum. ***In case of cutter, the setting is object sort. When sort setting is selected, set OFF in the sort setting on the plotter side.**

■ Path Overlapping recognition: ***Valid only when using cutter.**

Detects the overlapping objects and cuts the coalescent outer shape. Unclosed compound pass is invalid.

■ Output Pen Order:

Assigns a pen to each layer. When sort setting is ON, plots out in order of layer.

■ Cutting Frame: ***Valid only when using cutter.**

Cuts square frame which includes all objects. Margin can be set freely.

■ Line Optimize: Decreases the number of output points effectively, and speed is up. Off is the highest grade.

■ Error Adjustment: It is a function for expanded output. Even in the expanded mode, output quality is high.

■ Dotted Line Cutting: ***Valid only when using cutter.**

Dotted line cutting is available. The dotted line setting is made in "Plotter Addition" (next page)

***When this function is on, put the plotter setting in command priority mode.**

●Plotter Addition:

Choose Plotter Addition from the Plotter Config pull-down menu to display it.

■Margin (Frame Cut): ***Valid when frame cutting.**
Specifies a margin of frame cut. The default setting is 10 mm.

■Dotted Line Cut Tool No.: ***Valid when frame cutting.**
Specifies a cutter number for frame cutting.

■Page Length (Roll Paper):
Specifies a page length as the same length of the paper length specified on the plotter side. Default setting is OK for regular setting.

■Cut Tool No.: ***Valid when dotted line cutting.**
Specifies a cutter number for dotted line cutting.

■Line Seg. Cut Pressure: ***Valid when dotted line cutting.**
Specifies a cut pressure of line segment for dotted line cutting.

■Margin Cut Pressure: ***Valid when dotted line cutting.**
Specifies a cut pressure of margin for dotted line cutting. According to the setting, half cutting is available.

■Line Segment Length: ***Valid when dotted line cutting.**
Specifies a line segment length for dotted line cutting.
* IPU is 0.025 mm.

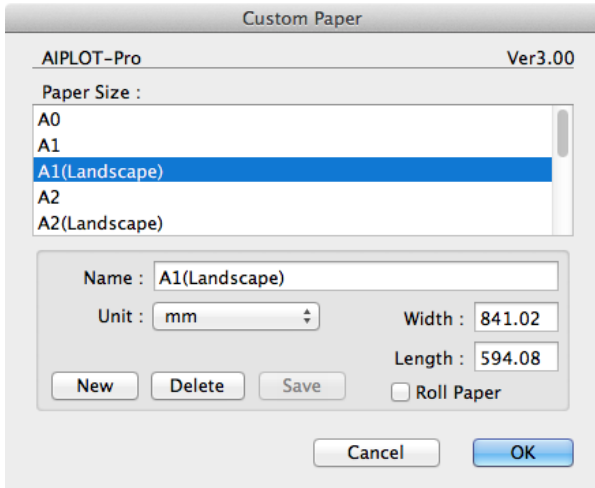
■Margin Length: ***Valid when dotted line cutting.**
Specifies a margin length for dotted line cutting.

■Debug Mode:
For conducting checks if a problem occurs. Usually, this setting is OFF.

■Connection Point (Host): ***Valid only when networking.**
When networking with a separately sold AIPLLOT-Server or TCP/IP, this setting is required. When connecting a plotter to AIPLLOT-Server or a printer server, input the TCP/IP address.

■Port No.: ***Valid only when networking.**
Default is 1024. If you are not sure, ask your network administrator.

■Plotter Unit: ***Valid only when networking.**
Usually use 40 as default. If the resolution on the plotter side is 0.1, this should be 10.



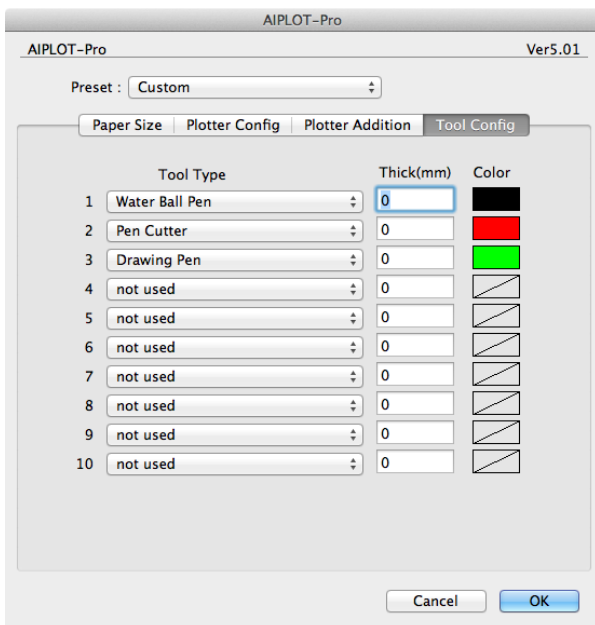
■ Paper Size:

(On Mac, this setting is accessed from “Custom” button in Paper Size tab.)

Various paper sizes can be specified, as shown in the figure.

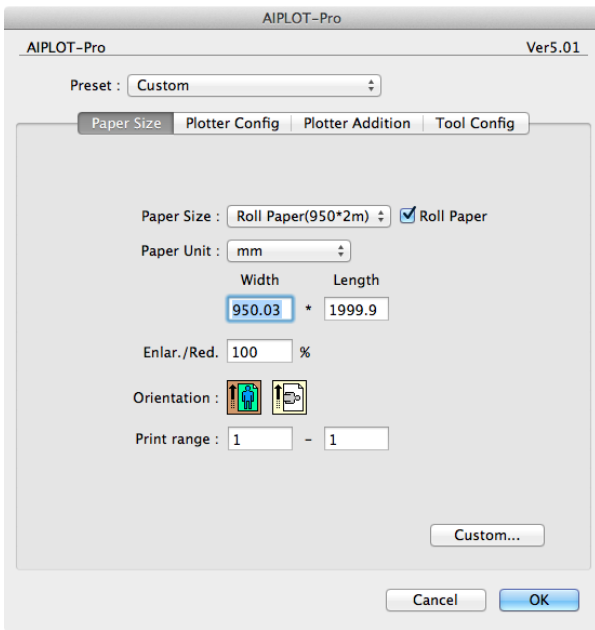
When setting a new paper size, first, input the paper name. Then, choose a unit from the pull-down menu and input appropriate values for Width and Length. For a roll of paper, make sure the Roll Paper checkbox is selected. Lastly, push the New button to complete the registration. In case of deletion or change, proceed in the same way as newly setting.

Specify Length by referring to the plotting range of illustrator and the recommended distance of plotter.



■ Tool Config:

Specifies a pen number and a type mounted on the plotter magazine. If a pen is not mounted, set “not used.” If a pen of the same type but different color is specified as shown in the figure, select a suitable color in the Color setting. In case of a mechanical pencil, input lead thickness in Thick (mm). The specified pen color name and thickness are displayed in plot-out display for easy pen setting. If only using one pen such as a cutting plotter, select an adequate cutter in the first row.

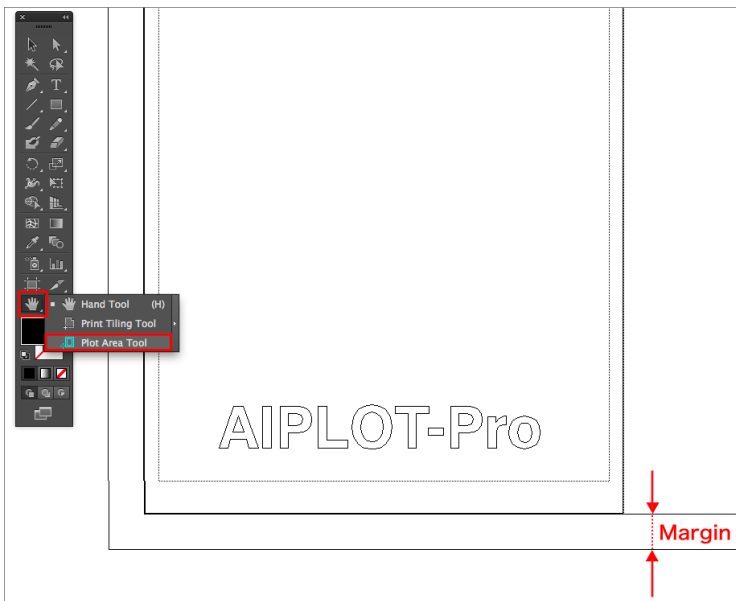


■ Paper Size

Specifies Paper Size and Orientation from the pop-up menu as shown in the figure.

Long-sized output is available by specifying an output object and a compression ratio on the paper size.

When completing the paper size setting, a plot area (plot paper) is displayed on the illustrator as shown below. When a plot area and a paper on the illustrator are overlapped, hide the Art Board and the Page Division from the display menu.



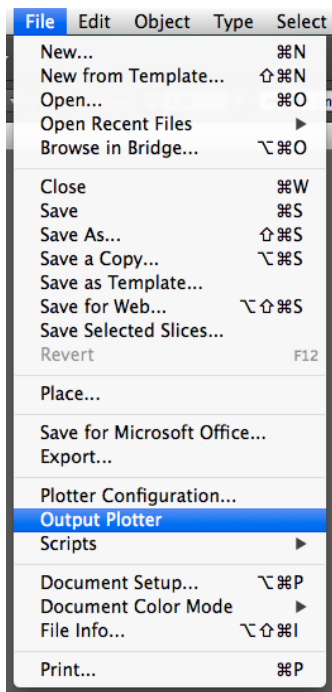
■ Placement:

Place a sheet set in advance by using the illustrator/Tool Box/Hand Tool or Plot Area Tool. Next, place the object to be output inside of the margin.

(*All cut characters shown above should be outlined. All non-outlined characters such as drawing character by pen plotter are output as stroke font.)

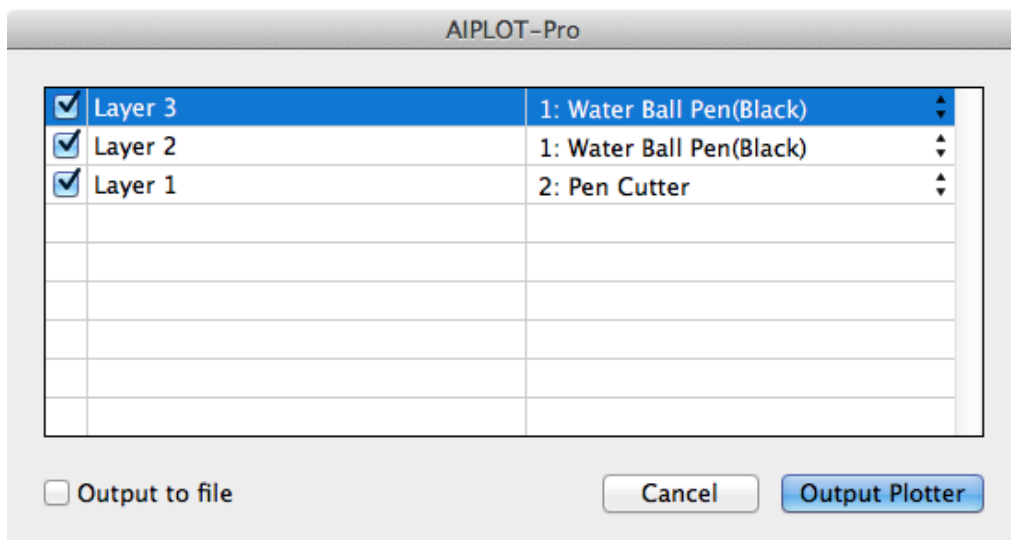
(As shown above, in case of portrait orientation, the sheet is plotted out from the lowermost sheet. In case of landscape orientation, the sheet is plotted out from the left of the sheet.)

After placement, select File/Output Plotter.



■ Output Plotter:

For output plotter, select File menu/Output Plotter as shown in the right figure. Then, the Output Plotter display will appear as shown below.



■ Output Plotter Display:

In the output plotter display mentioned above, a Layer drawn on the illustrator is displayed. Switch on/off the checkbox on the left end of the layer to plot out or not. From the pull-down menu, set a pen setting for each layer. (*If using the cutter pen, it is plotted out at the last whichever layer the cutter pen is in.) If the Output Plotter button is clicked, AILOT-Pro plots out to the end while changing the pen automatically.

◆Contact Information

※If you have inquiries, please contact us by Email.

※Please tell us your name, product's name, ID with the inquiry.

Contact Form:

<https://ipm-modelist.com/en/support/contact/>

E-mail:

info_eng@baby-universe.co.jp

iPM is developed by BABY UNIVERSE Inc.

